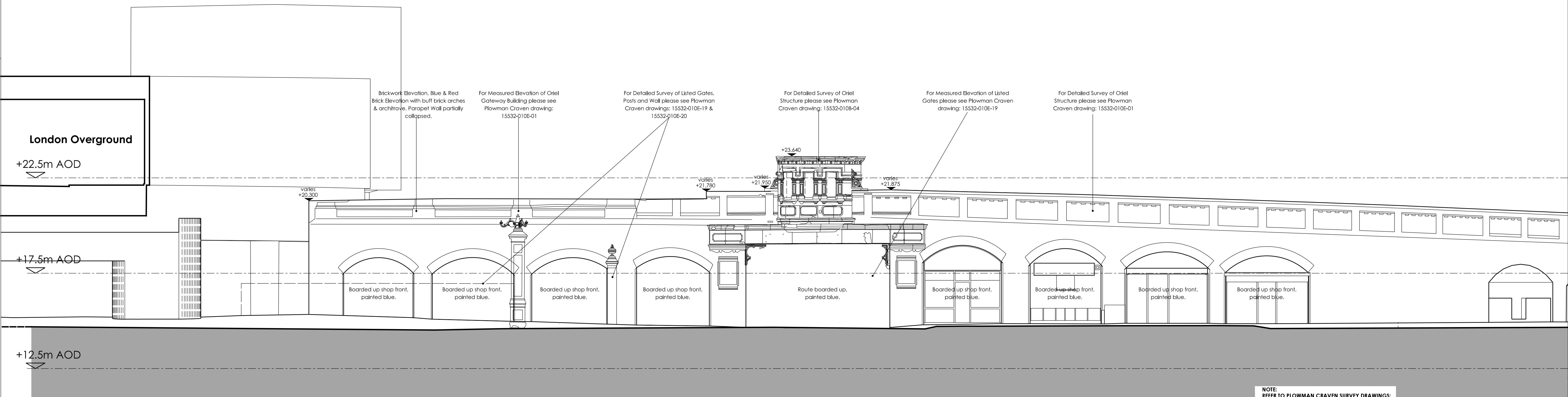


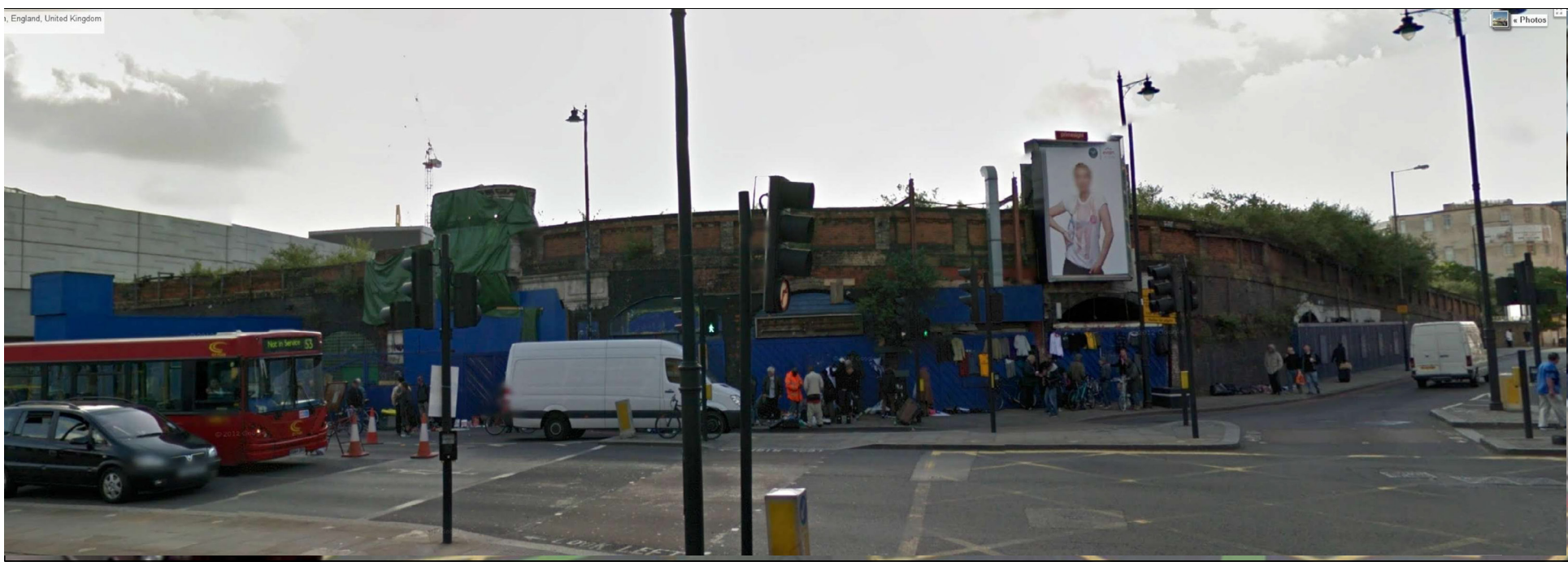
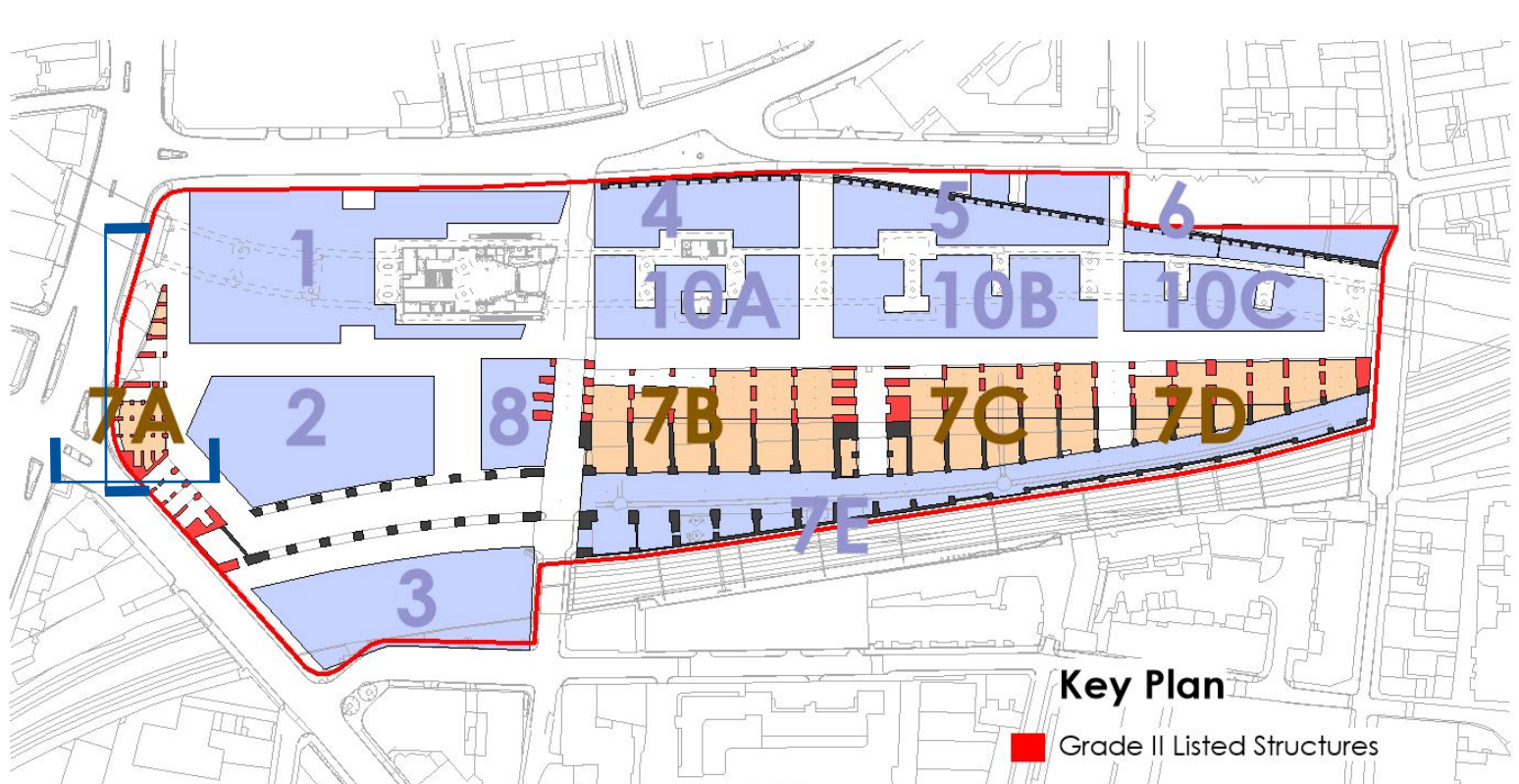
PLOT 7A - EXISTING SOUTH ELEVATION



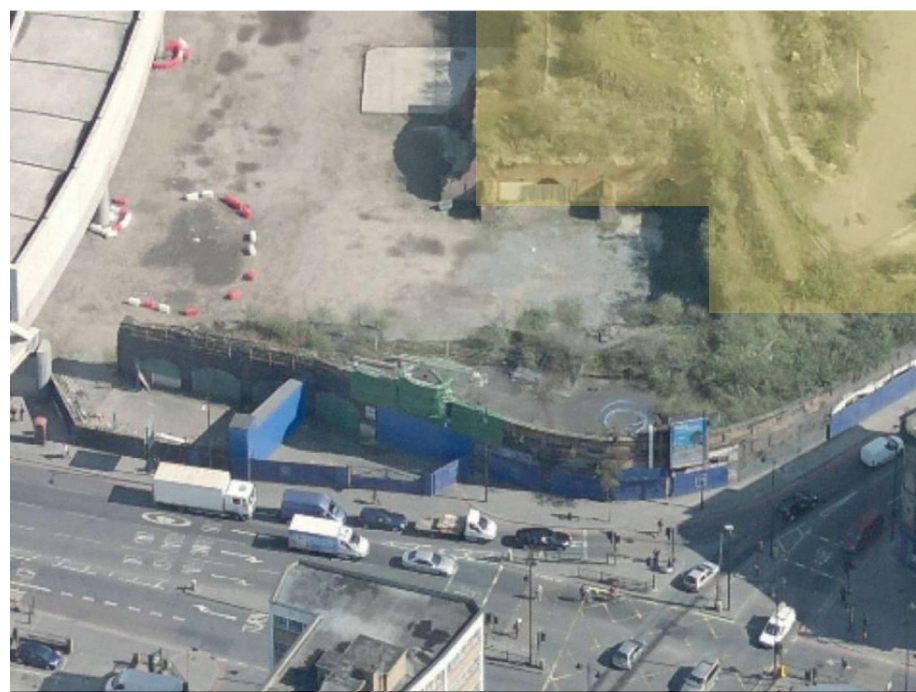
PLOT 7A - EXISTING WEST ELEVATION



REPAIRS TO BRICKWORK & ORIEL STRUCTURE - This work will include vegetation removal, repointing and replacement of badly spalled or missing bricks.



VIEW OF SHOREDITCH HIGH ST AND COMMERCIAL STREET JUNCTION

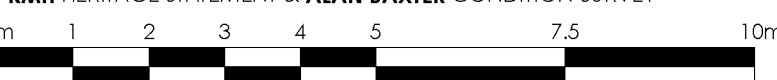


BIRD'S EYE VIEW FROM SOUTH WEST - Arches highlighted yellow are proposed to be removed leaving the Oriel Gateway as a stand alone building people can move around and through, giving the site a unique identity and improving pedestrian flow into the Goodyard.

NOTE:
REFER TO PLOWMAN CRAVEN SURVEY DRAWINGS:

- 15532-010B-04 (A) - Oriel Drawings
- 15532-010E-01 - Measure Elevation for Listed gateway Building
- 15532-010E-19 - Listed Gate
- 15532-010E-20 - Listed Gate Posts
- 15532-010F-01 (A) - 3D Street Survey
- 15532-010F-02 (B) - 3D Site Topo
- 15532-010F-03 (A) - Boundary Drawing
- 15532-010W-02 (A) - Railway Cutting
- 15532-013F-01 (B) - Planimetric Survey
- W15532-010SM - 3D Arch Survey

FOR DETAIL OF ARCHES REFER TO:
KMH HERITAGE STATEMENT & ALAN BAXTER CONDITION SURVEY



Do not scale this drawing
Do not derive dimensions from digital media

Rev	Date	Revision Notes	Drawn by	Checked	Rev	Date	Revision Notes	Drawn by	Checked	Rev	Date	Revision Notes	Drawn by	Checked	Rev	Date	Revision Notes	Drawn by	Checked
—	—	—	—	—	—	—	—	—	—	—	—	—	—	—	—	—	—	—	—
—	—	—	—	—	—	—	—	—	—	—	—	—	—	—	—	—	—	—	—
—	—	—	—	—	—	—	—	—	—	—	—	—	—	—	—	—	—	—	—
—	—	—	—	—	—	—	—	—	—	—	—	—	—	—	—	—	—	—	—
—	—	—	—	—	—	—	—	—	—	—	—	—	—	—	—	—	—	—	—
—	—	—	—	—	—	—	—	—	—	—	—	—	—	—	—	—	—	—	—
—	—	—	—	—	—	—	—	—	—	—	—	—	—	—	—	—	—	—	—
—	—	—	—	—	—	—	—	—	—	—	—	—	—	—	—	—	—	—	—
—	—	—	—	—	—	—	—	—	—	—	—	—	—	—	—	—	—	—	—
—	—	—	—	—	—	—	—	—	—	—	—	—	—	—	—	—	—	—	—

Drawing status:		PLANNING FOR LISTED BUILDING CONSENT		Job No:	3465	Drawing No:	BGY-FBA-07-XX-DR-A-00_10-7A52	Rev:	P1
Job title:				© Drawing & Design Copyright of:					
Drawing title:				FAULKNERBROWNS ARCHITECTS					
Date:		Scale:		Drawn By:		Checked By:			
April 19		1:100@A1		JK		TL			

FaulknerBrowns LLP
Osborn House
Northumbrian Way
Killingworth
Newcastle upon Tyne
NE12 5DW

T +44 (0) 191 2683007
F +44 (0) 191 2478132